

STAYFLOW STRAINERS

YIFD1 & YIFD2

Y-STRAINER, 150# & 300# FLANGED

Cast Iron Steel (ASTM A-126, Class B)

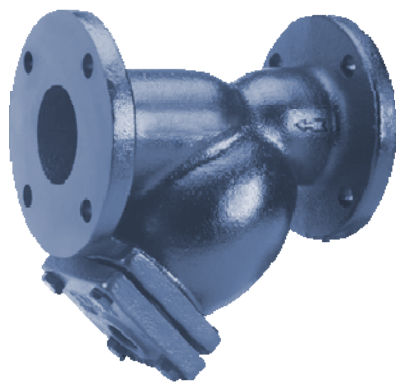
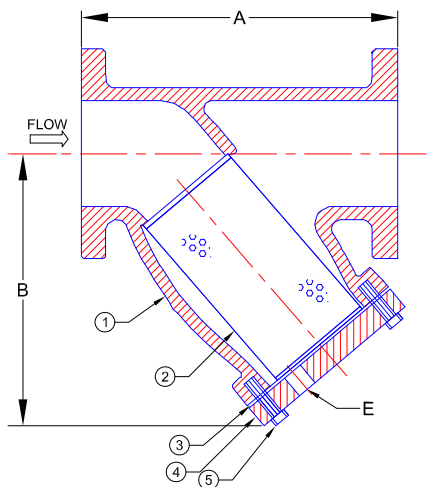
STANDARD SCREENS

SIZE (in)	SCREEN PERFORATION			
	STEAM		LIQUID	
	(in)	OPEN AREA	(in)	OPEN AREA
2 TO 4	3/64	33%	1/16	30%
5 TO 10	3/64	33%	1/8	43%
12	1/16	30%	1/8	43%
14 & UP	1/8	43%	1/8	43%

The default standard screens are for liquid service unless specified. Many other options are available.

PARTS LIST

ITEM	DESCRIPTION	MATERIAL
1	BODY	CAST IRON (ASTMA A 126 CLASS B)
2	SCREEN (BASKET)	STAINLESS STEEL (304)
3	GASKET	COMPOSITION
4	COVER	CAST IRON (ASTMA A 126 CLASS B)
5	HEX HEAD CAP	STEEL



DIMENSIONS & WEIGHT

SIZE (in)	A		B		E		WT (lbs)	
	125#	250#	125#	250#	125#	250#	125#	250#
2	8-3/8	9-7/8	8-3/8	6-1/4	1-1/4	1/2	30	33
2-1/2	9-7/8	11-1/4	8-3/8	7-3/4	1-1/4	1-Jan	35	49
3	10-1/4	12-1/2	7-3/8	8-1/4	1	1	35	57
4	12-1/8	14-5/8	8-3/4	10-1/8	1-1/2	1-1/4	65	106
5	15-5/8	18	12	12-1/2	2	1-1/4	105	157
6	18-9/16	20-3/8	14	14-3/8	2	1-1/2	155	215
8	24-1/8	23-7/8	17-3/4	17-1/2	2	1-1/2	240	315
10	29-9/16	29-5/8	21-1/4	21	2	2	400	525
12	33-3/4	33-3/4	24	23-5/8	2	2	500	700
14	37-1/8	37-1/4	25-1/2	27-1/8	2	2	825	1400
16	42-3/8	42-3/8	29-1/8	29-1/4	2	2	1050	1850
18	46-3/16		41				1723	
20	54-1/2		43		2		2660	

FLOW COEFFICIENTS

SIZE (in)	Cv	SIZE (in)	Cv
2	62	8	942
2-1/2	98	10	1572
3	155	12	2261
4	269	14	3479
5	364	16	5060
6	942	18	6008

SCREEN AREA (150#)

SIZE (in)	SQ IN	SIZE (in)	SQ IN
2	52	8	411
2-1/2	70	10	611
3	61	12	836
4	100	14	1175
5	136	16	1471
6	243	18	2382

See elsewhere for calculating Net Free Area.

PRESSURE VS. TEMPERATURE

